

# SAVANNAH SERIES

## PAGE 1



### PEAK 35

The Peak 35 is one of a kind. There is no other linear fireplace on the market today that can offer you such a sophisticated feel at a realistic price.

The Peak 35 has all the class of a modern contemporary linear fireplace.

#### Media: Clear Glass and River Pebbles

VIEWING AREA: 15" H x 32-1/2" W

High 21,000BTU's

Low 13,000BTU's

Framing Dim:

33-1/2"H x 38"W x 15-1/2"D

Internal Ceiling = Min 48"

Mantle Height = 40"

See page 8 for Dimensional info.

\*Safety Screen built into surround

Options and Accessories

See page 7

Reflective panels included

### CANYON 35

This 35" See-Thru Linear fireplace is the narrowest adaptable and affordable See-thru on the market today. Framing depth of only 11". Why settle for a 22" thick wall when space is precious...

#### Media: Clear Glass and River Pebbles

VIEWING AREA: 15" H x 32-1/2" W

High 20,000BTU's

Low 13,000BTU's

Framing Dim:

32"H x 39-1/2"W x 10-7/8"D

Internal Ceiling = Min 40"

Mantle Height = 40"

See page 8 for Dimensional info.

\*Safety Screen attached

Options and Accessories

See page 7



# FIREPLACE MEDIA

## PAGE 7

### Glass Option



Clear Glass



White Glass



Black Glass

### Pebble Option



River Pebbles



Grey Pebbles

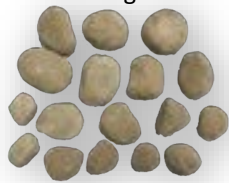
### Ceramic Stone Set

3pc Rock Set



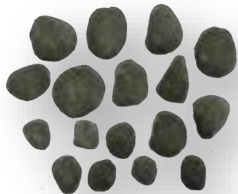
17pc Ceramic Rock Set

Beige



17pc Ceramic Rock Set

Light Grey



17pc Ceramic Rock Set

Dark Grey



DWLS 7PC log set for 45/55/65 series



Close up

### Driftwood - Large #1 & #2

Each Sold Separately

#1



#2



### Driftwood Set - Small

Sold in set of 3



### Deluxe System

- Electronic Ignition
- Fan Kit w/6 Stage Adjustable Fan Control
- Modulation Flame Control
- Deluxe Remote w/7 Day Programmable Thermostat



### Surround

Basic Black



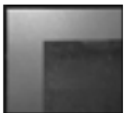
Decorative Black



Clean Face (no surround)



Finish to fireplace



Surround has the safety screen integrated



Every one of our gas fireplaces has been designed, tested and manufactured with a new safety screen.

### Quality Craftsmanship

Savannah's products are designed with superior components and materials, assembled by trained craftsmen who take great pride in their work.

The burner and valve assembly are leak tested and test fired at a quality control test station. Once assembled, the complete fireplace is thoroughly inspected by a qualified technician before packaging to ensure that you, the customer, receives the quality product that you expect from Savannah.

Savannah shall not be liable for any direct, indirect, consequential or incidental damages about the use of this catalog or any related materials. The information in this catalog is advisory in nature and is subject to change. Savannah may make improvements and changes in the products described in this catalog without notice. Changes will be periodically made to the information in the new editions. Efforts have been made to ensure that the contents of this catalog are correct. Should you find an error, Savannah welcomes your comments to improve our communications. Please contact Savannah at 1 604 231 8923. Contents of this catalog are subject to change without prior notice at the discretion of Savannah Heating Products Ltd. This document has been prepared for the use of employees and customers of Savannah and may not be reproduced without the prior, written approval of Savannah Heating Products LTD.

# DIMENSIONAL CHART AND FEATURES



Model	BTU's		Vent	Height		Width		Depth		Viewing Area		Efficiency
	Natural Gas	Propane		Actual	Framing	Actual	Framing	Actual	Framing	Height	Width	
PEAK 35	Hi 21,000	20,750	Top	27-1/2"	33-1/2"	34-1/8"	38"	14-13/32"	15-1/2"	15"	32-1/2"	65.10%
	Lo 13,000	13,000	4" & 7"									

Standard Features:			Surround: (Mandatory)			Options:		
See page 1	• Linear Design		• Basic Black w/Safety Screen			• Media Kits		
	• Deluxe System		• Decorative Black w/Safety Screen			• Ceramic Stones		
	• Clear Glass & River Pebble Kit		• Clean Face w/Safety Screen			• Driftwood		
	• Tempered Glass							



Model	BTU's		Vent	Height		Width		Depth		Viewing Area		Efficiency
	Natural Gas	Propane		Actual	Framing	Actual	Framing	Actual	Framing	Height	Width	
CANYON 35	Hi 20,000	19,500	Top	27.38"	32"	35.3"	39-1/2"	11.88"	10-7/8"	15"	32-1/2"	63.45%
	Lo 13,000	13,500	4" & 7"									

Standard Features:			Surround:			Options:		
See page 1	• True Clean Face Design		• Decorative Black			• Media Kits		
	• Deluxe System					• Ceramic Stones		
	• Clear Glass & River Pebble Kit					• Driftwood		
	• Tempered Glass							



Model	BTU's		Vent	Height		Width		Depth		Viewing Area		Efficiency
	Natural Gas	Propane		Actual	Framing	Actual	Framing	Actual	Framing	Height	Width	
Bonaparte 48	Hi	26,000	Top	27"	56"	47.63"	51-3/4"	9.85"	8-3/4"	13"	41"	65.8%
	Lo	16,000	4" & 6"									

Standard Features:			Surround :			Options :		
See page 5	• Linear Design		• No Surround			• Driftwood & Media Kits		
	• Full Deluxe System					• Ceramic Stone		
	• Black Glass and Grey Pebble Kit					• Media Kits		
	• Borosilicate Glass							



Model	BTU's		Vent	Height		Width		Depth		Viewing Area		Efficiency
	Natural Gas	Propane		Actual	Framing	Actual	Framing	Actual	Framing	Height	Width	
RIDGE 42	Hi 30,000	N/A	Top	36"	43"	40-3/4"	45-3/4"	17-1/2"	19-1/2"	23-1/2"	34-1/4"	67.15%
	Lo 22,000	N/A	4" & 7"									

Standard Features:			Surrounds:			Options:		
See page 2	• True Clean Face Design		• Basic Black 3 Sided			• Remote		
	• Electronic Ignition					• Deluxe System		
	• West Coast Log Set							
	• Tempered Glass							