

Quality is in the Flame

sauvonnah

HEATING PRODUCTS

2021



SAVANNAH SERIES

PAGE 1



PEAK 35

The Peak 35 is one of a kind. There is no other linear fireplace on the market today that can offer you such a sophisticated feel at a realistic price.

The Peak 35 has all the class of a modern contemporary linear fireplace.

Media: Clear Glass and River Pebbles

VIEWING AREA: 15" H x 32-1/2" W

High 21,000BTU's

Low 13,000BTU's

Framing Dim:

33-1/2"H x 38"W x 15-1/2"D

Internal Ceiling = Min 48"

Mantle Height = 40"

See page 8 for Dimensional info.

*Safety Screen built into surround

Options and Accessories

See page 7

Reflective panels included

CANYON 35

This 35" See-Thru Linear fireplace is the narrowest adaptable and affordable See-thru on the market today. Framing depth of only 11". Why settle for a 22" thick wall when space is precious...

Media: Clear Glass and River Pebbles

VIEWING AREA: 15" H x 32-1/2" W

High 20,000BTU's

Low 13,000BTU's

Framing Dim:

32"H x 39-1/2"W x 10-7/8"D

Internal Ceiling = Min 40"

Mantle Height = 40"

See page 8 for Dimensional info.

*Safety Screen attached

Options and Accessories

See page 7



RIDGE 42

Built to be the centerpiece of any stylish living room, the RIDGE 42 is a modern, flush front, clean face fireplace that is the cutting edge of style. At 42" wide, it will stand out in any setting. 30,000 BTU's on high and a reasonable 22,000 BTU's on low gives you both heat and relaxed output.

Media: West Coast Log Set

VIEWING AREA: 23-1/2" H x 34-1/4" W West Coast Log Set Only

High 30,000BTU's

Low 22,000BTU's

Framing Dim:

43"H x 45-3/4"W x 19-1/2"D

Internal Ceiling = Min 66"

Mantle Height = 50"

See page 8 for Dimensional info.

*Safety Screen attached



NOBLE 36

For those who are looking for a little more punch from their fireplace without taking up a lot of space, the Noble 36 is pound for pound the best bet out there. It boasts 26,000 BTU's and is proof good things come in small packages. With compact framing dimensions of only 36" wide and 15" deep, its amazing that this little unit releases so much heat!

Media: NBL7 Log Set

VIEWING AREA: 16-1/2" H x 29" W

High 26,000BTU's

Low 18,000BTU's

Framing Dim:

37"H x 38"W x 15"D

Internal Ceiling = Min 52" Min

Mantle Height = 42" Min

See page 9 for Dimensional info.

*Safety Screen attached

Deluxe System Only

- Reflective Panels included



SAVANNAH SERIES

PAGE 3



Only available for the 45 / 55 / 65



ESSENCE 45

There is no other linear on the market today with as many standard features as the Limited Essence at this price. The Essence comes equipped with a full deluxe package that includes electronic ignition, a dual fan kit, modulating valve and 7 day programmable thermostat remote that can adjust the flame 7 levels and the fan 6 levels up and down.

Media: Black Glass and Grey Pebbles

VIEWING AREA: 18-1/2" H x 42" W

High 30,000BTU's

Low 22,000BTU's

Framing Dim:

39"H x 48-1/4"W x 16-1/2"D

Internal Ceiling = Min 58"

Mantle Height = 42"

See page 9 for Dimensional info. *Safety Screen built into surround

Deluxe System Only

- Reflective panels included

Options and Accessories

See page 7

PINNACLE 55

The Pinnacle 55 is the flagship of our fireplace line. It is a 55" linear fireplace that will be the centerpiece of your living room. Fully loaded with porcelain panels and a deluxe system at such a reasonable price. Plus, its 36,000 BTU's turn all the way down to 21,000 BTU's on low. A very versatile heating capacity!

Media: Black Glass and Grey Pebbles

VIEWING AREA: 18-1/2" H x 52-3/4" W

High 36,000BTU's

Low 21,000BTU's

Framing Dim:

39"H x 58-1/2"W x 17-1/2"D

Internal Ceiling = Min 58"

Mantle Height = 45"

See page 9 for Dimensional info.

*Safety Screen built into surround

Deluxe System Only

- Reflective panels included

Options and Accessories

See page 7



SUMMIT 65

The Summit 65 is our new extension of our popular Pinnacle 55 linear. With an extra 10" to play, with the Summit 65 takes what everyone loves about the Pinnacle one step further. Doing so with an extraordinary flame that only bumps up the BTU's to a manageable 38,000 BTU's. Meaning you can turn the fireplace on and leave it on, amazing for a linear this size!
Plus, only 17-1/2" deep required for framing!

Media: Black Glass and Grey Pebbles

VIEWING AREA: 18-1/2" H x 62-3/4" W

High 38,000BTU's

Low 27,000BTU's

Framing Dim:

39"H x 68-1/4"W x 17-1/2"D

Internal Ceiling = Min 58"

Mantle Height = 45"

See page 9 for Dimensional info. *Safety Screen built into surround

Deluxe System Only

- Reflective panels included

Options and Accessories

See page 7



SELECT 42

It is big and it is stylish. The Select 42 is a 42" flush clean face fireplace that comes complete with porcelain panels and a deluxe system as all of our limited line of fireplaces do. However, the Select 42 also showcases our new "traditional" style log set and our revamped burner with increased flame. It is one good looking fireplace and fully loaded!

Media: Traditional Log Set

VIEWING AREA: 23-1/2" H x 34-1/4" W

High 30,000BTU's

Low 22,000BTU's

Framing Dim:

43"H x 45-3/4"W x 19-1/2"D

Internal Ceiling = Min 66"

Mantle Height = 50"

See page 10 for Dimensional info.

*Safety Screen attached

Deluxe System Only

- Reflective panels included



SAVANNAH SERIES

PAGE 5



BONAPARTE 48

The Bonaparte is a 48" wide linear See-Thru fireplace that is amazingly with only 8-3/4" deep required for framing. It boasts a potent 26,000 BTU's (with a turn down to 16,000BTU's on low) and a full Deluxe system, minus the fan option. There is enough heat thrown by this unit that a fan is unnecessary. After all, we want to be able to enjoy the beautiful flame as much as possible.

A sleek fireplace that will be easy to accommodate in both new home and renovation applications. With a fireplace this narrow, it can fit almost anywhere.

Media: Black Glass and Grey Pebbles

VIEWING AREA: 13" H x 41" W

High 26,000BTU's

Low 16,000BTU's

Framing Dim:

56"H x 51-3/4"W x 8-3/4"D

See page 8 for Dimensional info.

*Safety Screen attached

Deluxe System (with fan)

Options and Accessories

See page 7

OD2000 LINEAR OUTDOOR

Warm up your backyard and maximize your outdoor experience with the OD2000 linear 45" outdoor fireplace. At 40,000 BTU's, it will definitely take the chill off and the modern design will class up your backyard. The OD2000 is a completely stainless steel built fireplace from top to bottom. It is vent free for ease of installation and the stainless cover (included) will keep it protected for those days when it is not in use.

Media: Black Glass and Grey Pebbles

VIEWING AREA: 18-1/2" H x 42" W

High 40,000BTU's

Low 29,000BTU's

Framing Dim:

31"H x 47-3/8"W x 16"D

Internal Ceiling = Min 48"

Mantle Height = 42"

See page 10 for Dimensional info.

No Safety Screen required

*CERTIFIED for wood faming

Options and Accessories

See page 7



DVI26000 CHAMPION & GRAND

HD Log Set or Rock and Glass

Both the Grand and the Champion inserts are true clean face designs intended to maximize your viewing area.

The Deluxe System boasts all the bells and whistles including a 7 day programmable remote with thermostat control and 7 stage modulating flame control. The Deluxe System also has a 6 stage modulating fan so the homeowner can enjoy both radiant and convection heat from one fireplace.

-Deluxe System requires 110V

*Safety Screen separate

Champion/Grand

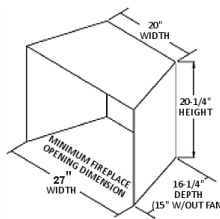
VIEWING AREA: 16" H x 25" W

High: 26,000BTU's

Low: 13,000BTU's

See page 10 for dimensional info

Min Clearances:



WESTWOOD

The Westwood boasts one of the boldest flames we have ever designed. The entire bottom of the burn chamber is one big stainless pan burner and much like the DVI26,000 Champion, the flame works its way around the log set creating an incredibly realistic burn. The log set and brick set are new designs for us; the brick being a darker shale rock design and the log set is big, bold, dark and charred.

The stoves slightly more contemporary design is meant to fit in with the rest of our lineup. It is also different and somewhat modern compared to the tired traditional look of freestanding stoves out there. Modern, but not too modern. We always aim to be unique!

*Safety Screen attached to the unit.

West Wood

VIEWING AREA: 14" H x 21" W

High: 26,500BTU's

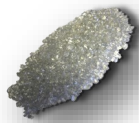
Low: 18,500BTU's

See page 10 for dimensional info

FIREPLACE MEDIA

PAGE 7

Glass Option



Clear Glass

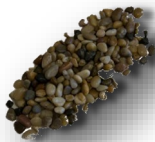


White Glass



Black Glass

Pebble Option



River Pebbles



Grey Pebbles

Ceramic Stone Set

3pc Rock Set



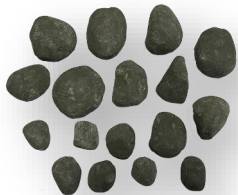
17pc Ceramic Rock Set

Beige



17pc Ceramic Rock Set

Light Grey



17pc Ceramic Rock Set

Dark Grey



DWLS 7PC log set for 45/55/65 series



Close up

Driftwood - Large #1 & #2

Each Sold Separately

#1



#2



Driftwood Set - Small

Sold in set of 3



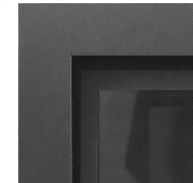
Deluxe System

- Electronic Ignition
- Fan Kit w/6 Stage Adjustable Fan Control
- Modulation Flame Control
- Deluxe Remote w/7 Day Programmable Thermostat



Surround

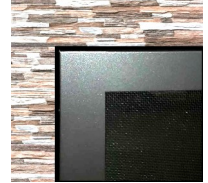
Basic Black



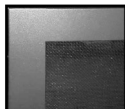
Decorative Black



Clean Face (no surround)



Finish to fireplace



Surround has the safety screen integrated



Every one of our gas fireplaces has been designed, tested and manufactured with a new safety screen.

Quality Craftsmanship

Savannah's products are designed with superior components and materials, assembled by trained craftsmen who take great pride in their work.

The burner and valve assembly are leak tested and test fired at a quality control test station. Once assembled, the complete fireplace is thoroughly inspected by a qualified technician before packaging to ensure that you, the customer, receives the quality product that you expect from Savannah.

Savannah shall not be liable for any direct, indirect, consequential or incidental damages about the use of this catalog or any related materials. The information in this catalog is advisory in nature and is subject to change. Savannah may make improvements and changes in the products described in this catalog without notice. Changes will be periodically made to the information in the new editions. Efforts have been made to ensure that the contents of this catalog are correct. Should you find an error, Savannah welcomes your comments to improve our communications. Please contact Savannah at 1 604 231 8923. Contents of this catalog are subject to change without prior notice at the discretion of Savannah Heating Products Ltd. This document has been prepared for the use of employees and customers of Savannah and may not be reproduced without the prior, written approval of Savannah Heating Products LTD.

DIMENSIONAL CHART AND FEATURES



Model	BTU's		Vent	Height		Width		Depth		Viewing Area		Efficiency
	Natural Gas	Propane		Actual	Framing	Actual	Framing	Actual	Framing	Height	Width	
PEAK 35	Hi 21,000	20,750	Top	27-1/2"	33-1/2"	34-1/8"	38"	14-13/32"	15-1/2"	15"	32-1/2"	65.10%
	Lo 13,000	13,000	4" & 7"									

Standard Features:		Surround: (Mandatory)		Options:	
See page 1	• Linear Design		• Basic Black w/Safety Screen		• Media Kits
	• Deluxe System		• Decorative Black w/Safety Screen		• Ceramic Stones
	• Clear Glass & River Pebble Kit		• Clean Face w/Safety Screen		• Driftwood
	• Tempered Glass				



Model	BTU's		Vent	Height		Width		Depth		Viewing Area		Efficiency
	Natural Gas	Propane		Actual	Framing	Actual	Framing	Actual	Framing	Height	Width	
CANYON 35	Hi 20,000	19,500	Top	27.38"	32"	35.3"	39-1/2"	11.88"	10-7/8"	15"	32-1/2"	63.45%
	Lo 13,000	13,500	4" & 7"									

Standard Features:		Surround:		Options:	
See page 1	• True Clean Face Design		• Decorative Black		• Media Kits
	• Deluxe System		• Ceramic Stones		
	• Clear Glass & River Pebble Kit		• Driftwood		
	• Tempered Glass				



Model	BTU's		Vent	Height		Width		Depth		Viewing Area		Efficiency
	Natural Gas	Propane		Actual	Framing	Actual	Framing	Actual	Framing	Height	Width	
Bonaparte 48	Hi	26,000	Top	27"	56"	47.63"	51-3/4"	9.85"	8-3/4"	13"	41"	65.8%
	Lo	16,000	4" & 6"									

Standard Features:		Surround :		Options :	
See page 5	• Linear Design		• No Surround		• Driftwood & Media Kits
	• Full Deluxe System				• Ceramic Stone
	• Black Glass and Grey Pebble Kit				• Media Kits
	• Borosilicate Glass				



Model	BTU's		Vent	Height		Width		Depth		Viewing Area		Efficiency
	Natural Gas	Propane		Actual	Framing	Actual	Framing	Actual	Framing	Height	Width	
RIDGE 42	Hi 30,000	N/A	Top	36"	43"	40-3/4"	45-3/4"	17-1/2"	19-1/2"	23-1/2"	34-1/4"	67.15%
	Lo 22,000	N/A	4" & 7"									

Standard Features:		Surrounds:		Options:	
See page 2	• True Clean Face Design		• Basic Black 3 Sided		• Remote
	• Electronic Ignition		• Deluxe System		
	• West Coast Log Set				
	• Tempered Glass				

DIMENSIONAL CHART AND FEATURES



Model	BTU's		Vent	Height		Width		Depth		Viewing Area		Efficiency
	Natural Gas	Propane		Actual	Framing	Actual	Framing	Actual	Framing	Height	Width	
Essence 45	Hi 30,000	27,000	Top	29.86"	39"	44-1/4"	48-1/4"	14-1/2"	16-1/2"	18-1/2"	42"	69.50%
	Lo 22,000	19,500	4" & 7"									
Standard Features:			Surrounds: (Mandatory)						Options:			
See page 3	• Linear Design			• Basic Black Surround w/Safety Screen					• Driftwood			
	• Full Deluxe System			• Decorative Black Surround w/Safety Screen					• Media Kits			
	• Reflective Panels			• Clean Face w/ Safety Screen								
	• Ceramic Glass											
	• Dual Stainless Steel Pan Burner											
	• Black Glass and Grey Pebble Kit											



Model	BTU's		Vent	Height		Width		Depth		Viewing Area		Efficiency
	Natural Gas	Propane		Actual	Framing	Actual	Framing	Actual	Framing	Height	Width	
Pinnacle 55	Hi 36,000	32,000	Top	29.86"	39"	54.29"	58-1/2"	14-1/2	17-1/2"	18-1/2"	52-3/4"	68.75%
	Lo 21,250	26,000	4" & 7"									
Standard Features:												



Model	BTU's		Vent	Height		Width		Depth		Viewing Area		Efficiency
	Natural Gas	Propane			Actual	Framing	Actual	Framing	Actual	Framing	Height	Width
Summit 65	Hi 38,000	38,000	Top	29.86"	39"	64-1/4"	68-1/4"	14-1/2"	17-1/2"	18-1/2"	62-3/4"	69.10%
	Lo 27,000	26,000	4" & 7"									
Standard Features:			Surrounds: (Mandatory)						Options:			
See page 4	• Linear Design			• Clean Face Black w/Safety Screen				• Driftwood				
	• Full Deluxe System			• Basic Black w/Safety Screen				• Media Kits				
	• Reflective Panels											
	• Borosilicate Glass											
	• Dual Stainless Steel Pan Burner											
	• Black Glass & Grey Pebble Kit											



Model	BTU's		Vent	Height		Width		Depth		Viewing Area		Efficiency
	Natural Gas	Propane			Actual	Framing	Actual	Framing	Actual	Framing	Height	
Noble 36	Hi 26,000	26,000	Top	28-1/2"	37"	39-1/2"	38"	13"	15"	16-1/2"	29"	65.80%
	Lo 18,000	18,000	4" & 7"									
Standard Features:				Surrounds:								
See page 2	• Clean Face Design			<div>• Included on unit</div>								
	• Full Deluxe System											
	• Reflective Panels											
	• Ceramic Glass											
	• 7 pc Traditional Log Set (NBL7)											

DIMENSIONAL CHART AND FEATURES



Model	BTU's		Vent	Height		Width		Depth		Viewing Area		Efficiency
	Natural Gas	Propane		Actual	Framing	Actual	Framing	Actual	Framing	Height	Width	
Select 42	Hi 30,000	29,000	Top	36"	43"	40-3/4"	45-3/4"	17-1/2"	19-1/2"	23-1/2"	34-1/4"	67.15%
	Lo 22,000	19,500	4" & 7"									

Standard Features:

See page 4

- Clean Face Design
- Full Deluxe System
- Reflective Panels
- Ceramic Glass
- 4 pc Traditional Log Set

Surrounds:

- Included on unit



Model	BTU's		Vent	Height		Width		Depth		Viewing Area		Efficiency
	Natural Gas	Propane		Actual	Min	Actual	Min	Actual	Min	Height	Width	
Insert	Hi 26,000	23,000	Top	20.049"	20-1/4"	30.129"	27"	18.215"	16-1/4"	16"	25"	68.30%
	Lo 13,000	16,500	3" & 3"									

Standard Features:

See page 6

- Clean Face Design
- Full Deluxe System
- Ceramic Brick
- Ceramic Glass
- 7 pc Log Set (West Coast or East Coast) or Rock and Glass

Surrounds:

- SSTI28 STANDARD
- SSTI26 STANDARD
- SSTI28-SLIM
- SSTI26-SLIM
- 4STI-SLIM



Model	BTU's		Vent	Height		Width		Depth		Viewing Area		Efficiency
	Natural Gas	Propane		Actual	Framing	Actual	Framing	Actual	Framing	Height	Width	
WestWood	Hi 26,500	24,000	Top	30"		28-1/2"	36"	17"		14"	21"	72.38%
	Lo 18,500	14,500	4" & 7"									

Standard Features:

See page 6

- Free Stand Design
- Stainless Steel Burner
- Ceramic Glass
- Full Deluxe System

- Brick Panels



Model	BTU's		Vent	Height		Width		Depth		Viewing Area		Efficiency
	Natural Gas	Propane		Actual	Framing	Actual	Framing	Actual	Framing	Height	Width	
OD2000	Hi 40,000	32,500	Vent-less	25"	31"	43-1/8"	47-3/8"	14"	16"	14-1/2"	39"	
	Lo 29,000	24,000										

Standard Features:

See page 5

- Clean Face Design
- Black Glass and Grey Pebbles
- Stainless Steel Cover

CHAMPION

GRAND



www.savannahheating.com

